



---

# Entrepreneurial University *Pathfinder*

Map, design & evaluate universities

[www.toolkit.aceeu.org](http://www.toolkit.aceeu.org)

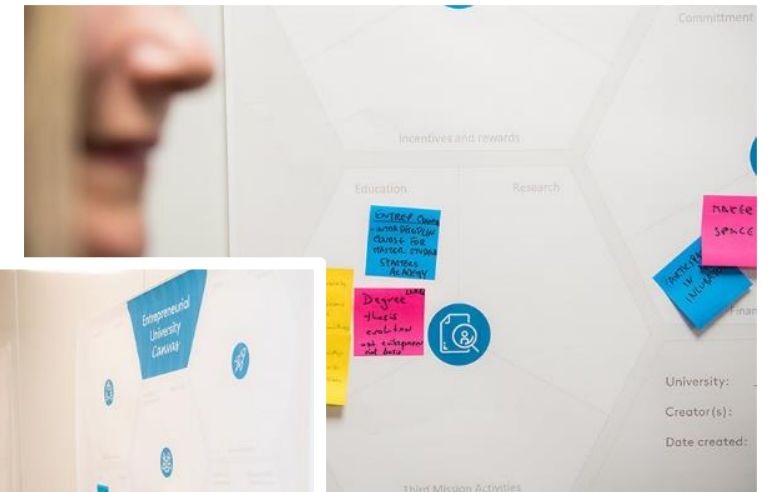


**ACEEU**  
ACCREDITATION COUNCIL  
FOR ENTREPRENEURIAL &  
ENGAGED UNIVERSITIES

# WHAT IS THE ACEEU PATHFINDER

## *A short description*

The Entrepreneurial University Pathfinder is a **flexible framework** to develop your own **path towards an entrepreneurial university**. The Path Finder consists of **15 hives** to be filled according to your university needs and objectives in each standard of ACEEU's Entrepreneurial University accreditation. The hives can be flexibly organised and connected to **design new actions, strategies and plans**.



# HOW TO USE THE PATHFINDER

## *A step by step guide*

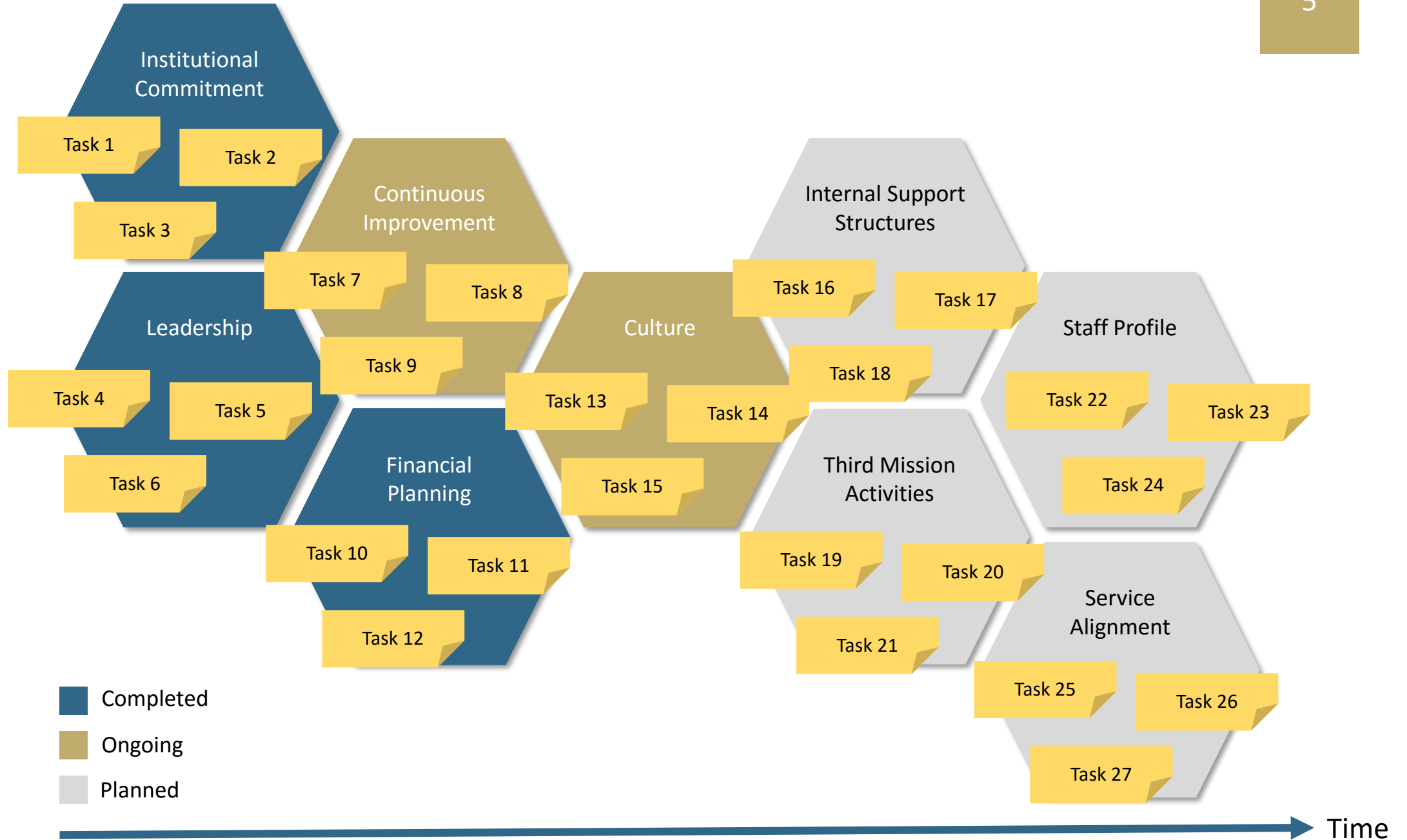
---

Optimally, the Entrepreneurial University Path Finder is used in combination with the Entrepreneurial University Canvas.

- **Review your analysis** results from the Entrepreneurial University Canvas and **identify key challenges and opportunities** that need to be addressed
- **Design new actions, strategies and plans** for each of the challenges and opportunities and **place these on the respective hive**
- **Connect the hives** according to the relations between the actions (e.g. place the hives in a chronological order in which they shall be implemented)
- **Share the results** with all those involved in the implementation of the designed actions, strategies and plans
- **Use colors to indicate the progress** of implementation (blue: completed; gold: ongoing; grey: planned)



# TEMPLATE FOR CREATING YOUR OWN PATH





---

**ACEEU**

ACCREDITATION COUNCIL  
FOR ENTREPRENEURIAL &  
ENGAGED UNIVERSITIES